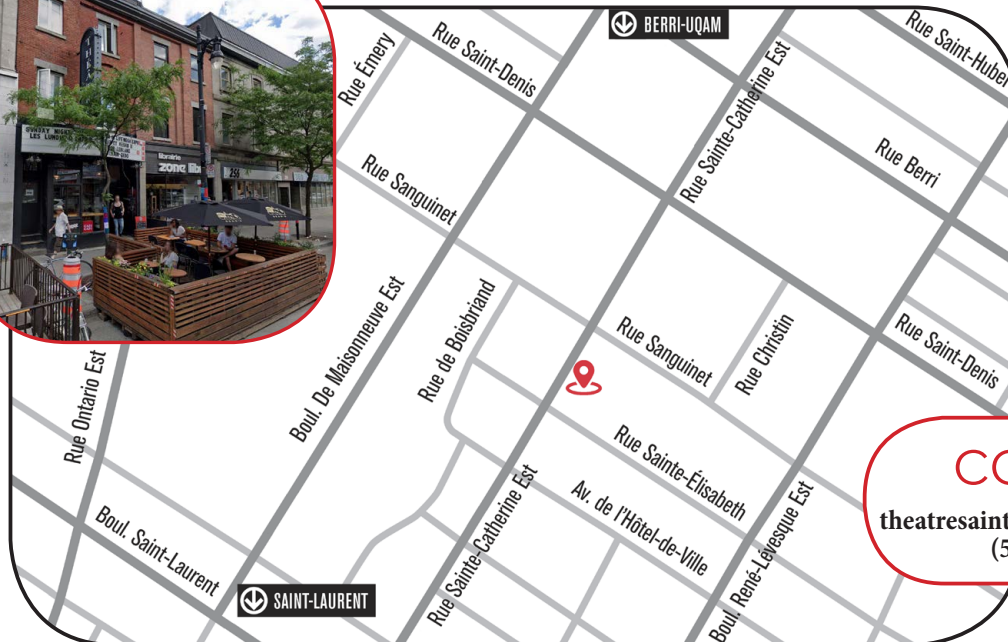


THÉÂTRE SAINTE-CATHERINE

CAFÉ - BAR



CONTACT

theatresaintecatherine@gmail.com
(514) 284 3939

ACCESSIBILITY

• Address :

264 Sainte-Catherine East Montreal H2X 1L4



• Public transport

Metro Berri-UQAM (orange, green and yellow)
+ bus lines

• **Access for people with reduced mobility** : Street level entrance. An access ramp can be installed at any time upon request. Unfortunately, the restrooms are small and not equipped with a holding bar, so access for users with reduced mobility is limited.

SERVICES

- Air Conditioning
- Wireless Internet (WI-FI)
- Box office service
- Audio visual technician
- Bar and café
- Liquor licence
- Catering
- Menu includes vegetarian, vegan, gluten-free and lactose-free options

VENUE

• Elevated stage

Width : 13' (3.96m)

Depth : 8' (2.44m) + 4' (1.22m) behind curtain

Height : 2'2" (0.66m)

Floor : wood / 2 black stage curtains

• Ceiling

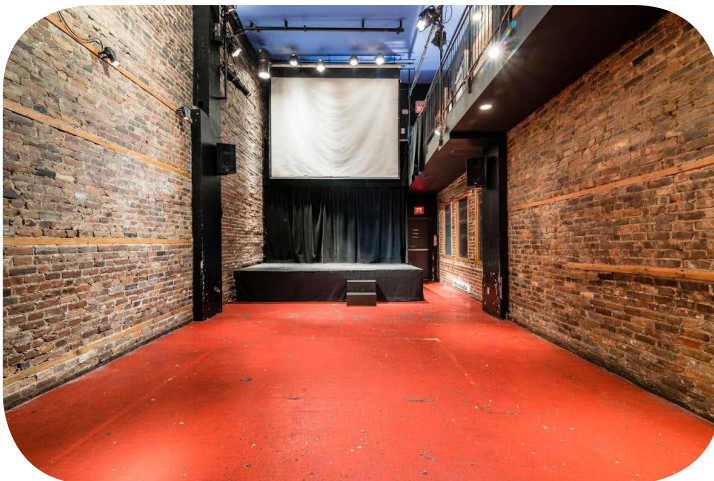
Height : 21' (6.40m)

Stage to ceiling : 18'9" (5.72m)

Stage to rigging point : 17'10" (5.44m)

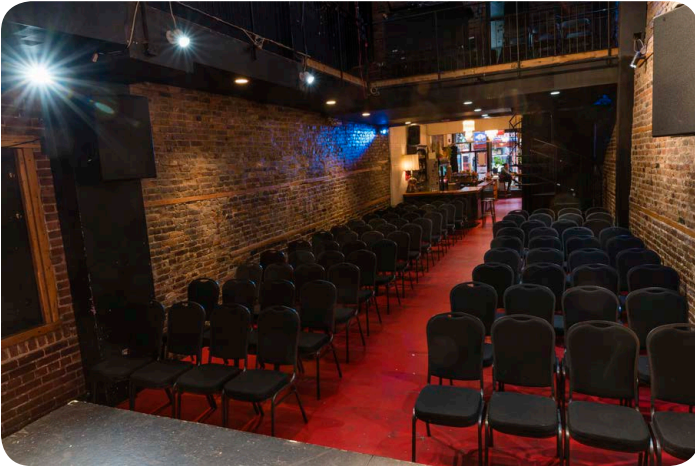
• **Dressing room** : Situated on the 2nd floor with a separate entrance. Equipped with coat rack, makeup table, mirrors, tables and chairs.

• **Capacity** : 100 seated or 130 standing



ROOM CONFIGURATIONS

- **Types of event** : Anniversary / party, business lunch, classes, conference and symposium, congress, corporate event, corporate meeting, dinner cocktail, exhibition, fundraiser evening, holiday party, kid's birthday party, meeting / assembly, office party, school activity, seminar, show / concert, special event, wedding, workshop, 5 @ 7.
- Choose between our **11 configurations** (below) :



LES LUNDIS

- **Capacity (98)** :
88 seats + 10 on the mezzanine

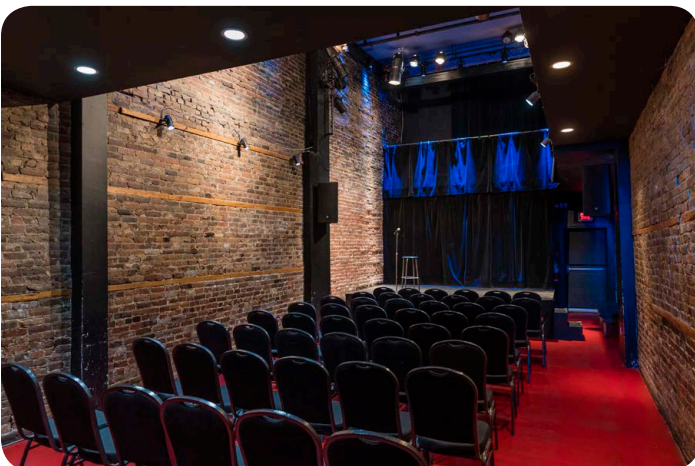
COMEDY #1

- **Capacity (84)** :
74 seats + 10 on the mezzanine



COMEDY #2

- **Capacity (58)** :
48 seats + 10 on the mezzanine





THEATRE

- **Capacity (58) :**
48 places + 10 en mezzanine

CABARET

- **Capacity (36 à 48) :**
36 to 48 seats + 10 on the mezzanine



CINEMA

- **Capacity (98) :**
88 seats + 10 on the mezzanine



DJ - LOUNGE

- **Capacity (130) :**
Dancefloor



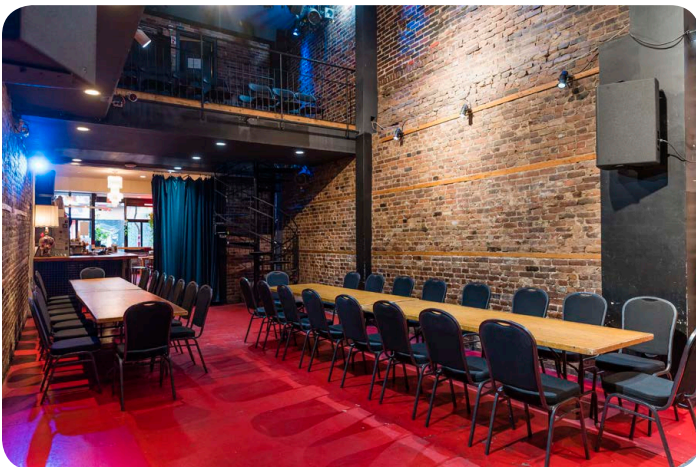


CONFERENCE

- **Capacity (54):**
Large table on the stage with screen
44 seats + 10 on the mezzanine

CAFÉ

- **Capacity (42):**
42 seats

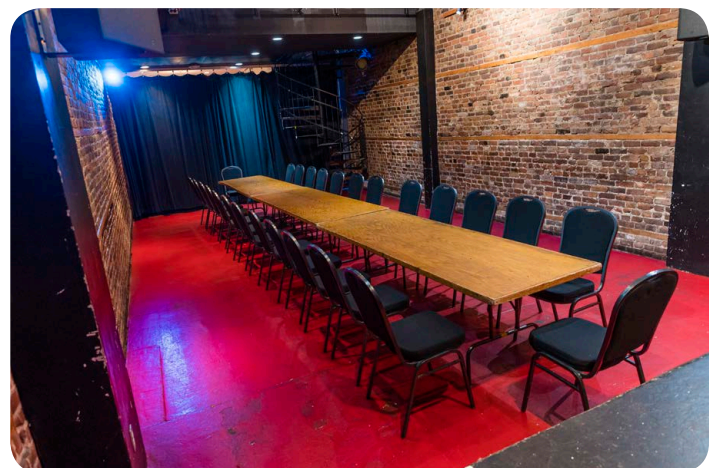


DINNER #1

- **Capacity (36):**
36 seats

DINNER #2

- **Capacity (26):**
26 seats



TECHNICAL EQUIPEMENT

TECH BOOTH COMPUTER

AMD Ryzen 3 2200G processor
with Radeon Vega Graphics 3.50GHz
RAM 8.00 Go

LIGHTING

• Console

QuickQ 20 Digital Lighting Console

• Dimmers

2x Data Stream 4 universal DMX-512 optical splitter
2x Leprecon ULD-340 twist lock 4 channel dimmer pack
4x Chauvet 4 channel DMX dimmer pack
1x Leprecon LD-360 MPX 6ch dimmer pack

• Stage lighting

7x Chauvet COLORado 1-Quad IP65 RGBW LED Wash Light
8x Ovation F-55FC RGBAL LED (3") inkie Fresnel
8x ETC Source Four Par
6x Strand SL Leko Lite 23-50° Variable Beam Angle Ellipsoidal
2x ETC Source Four Jr Zoom 25-50° Ellipsoidal
4x Altman 1KL6-20 40°
8x fresnels (2 with barn doors)
10x Altman Micro Ellipse

AUDIO

• Sound system

2x JBL AM5212/66 2 way tops (mains)
2x JBL AC18/95 2 way tops (mezzanine delays)
1x JBL EON610 2 way self-powered top (bar delay)
1x JBL SRX828SP Dual 18» Self-Powered Sub
1x Crown XTI4002 Two-channel 1200W Power Amplifier
1x Crown XTI1002 Two-channel 500W Power Amplifier

• Stage

2x JBL PRX710 2 way self-powered
2x FBT jolly 15 a 2 way self-powered

• FOH

Soundcraft SI Impact Digital Audio Console
Soundcraft Mini Stagebox 32 (3U) with MADI/USB Card

• Mics

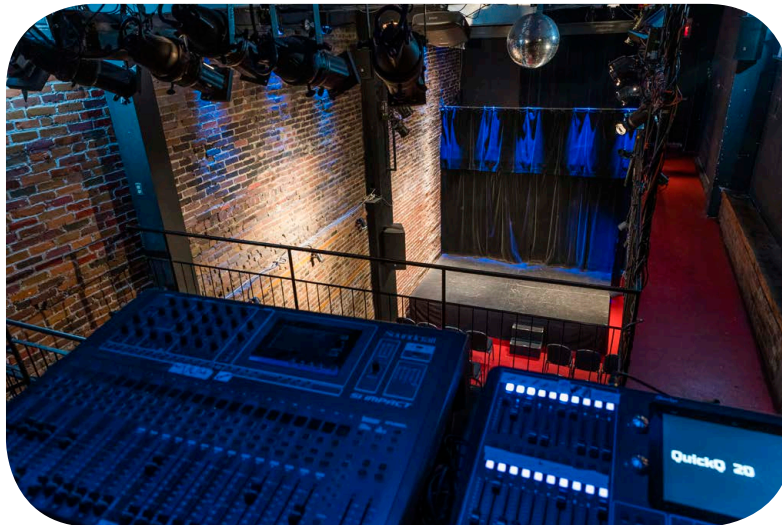
6x Shure SM58
1x Sennheiser e902

• DJ'S - 2x Radial PROD2

• DJ - Numark CDMIX2 dual CD player

VIDEO

Epson G-7905U WUXGA 3LCD w/ 4K projector with Standard Lens 7000 lumens
Draper Electric Projection Screen 165"(871/2"x140") 16/9 with Electric Hoists



INFO

Any questions?

theatresaintecatherine@gmail.com - (514) 284 3939